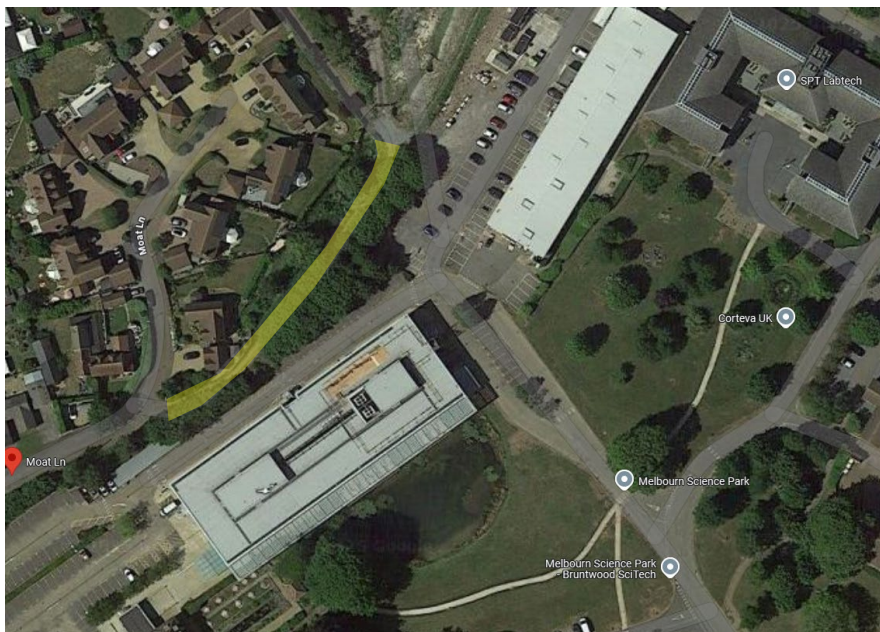


MA150 25c) Bruntwood request for dog waste bin



From: Bruntwood  
Date: September 2024

... We need some advice to tackle the rising problem of dog poo on our grounds, so please can you advise us on how the dog poo bins are setup/maintained in the village?

We obviously don't want to drive the dog walkers away, we're keen to make the grounds as accessible as possible and encourage public access but need to control dog waste, as we currently don't have anything in place to provide disposal.

I actually went to our summer house last week to fetch something and found a collection of stinking poo bags (along with a random nappy) shoved behind our BBQ, so it's definitely becoming a necessity now!

Can we please request installation of a dog waste bin at the end of the Moat Lane public footpath/the join to the park grounds or do we need to arrange this via a separate/specialist provider?

---

From: Parish Clerk  
Date: September

Consulted committee and suggested a private bin and collection be arranged for the science park.

---

From: Bruntwood  
Date: 4 February 2025

Yes, Bruntwood are happy to investigate the introduction of our own bins in the park, I just wasn't sure how to go about it and how to get them emptied, but you've answered that one for me, so thank you!

...One of the repeated complaints that we get on dog fouling (and general rubbish) is in the Moat Lane area.

Although it's not officially part of our property, we do send out staff out to litter pick the pathway when we can, but the dog poo side is something we can't help with down there.

**Would the council consider installing a waste bin in or near the Moat Lane area please?**

In the meantime, I will see what I can do from the Bruntwood side about installing our own bins on the park...Although I have to admit, it's not the legacy I hoped to leave on (Dog poo bin man)...

---