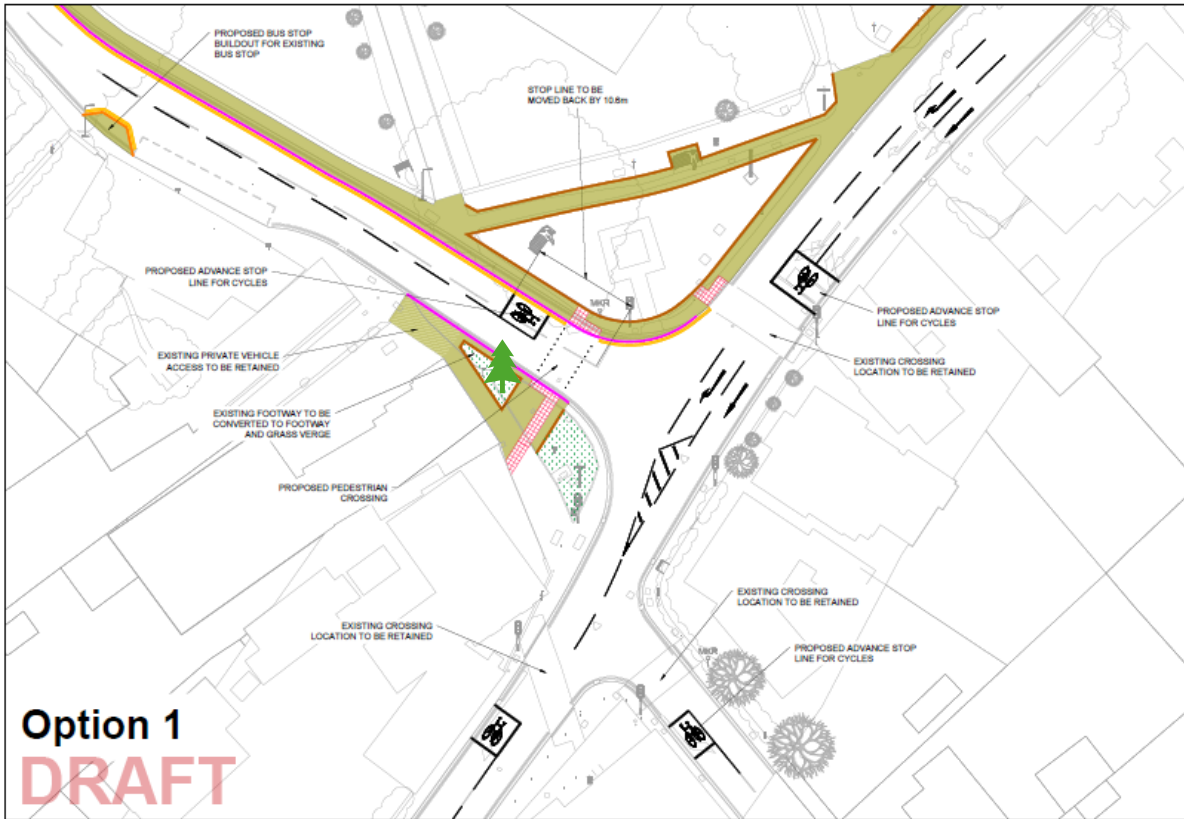


### Station Road junction

Cllrs agreed that Option 1 – shown below was the optimum option for this junction.

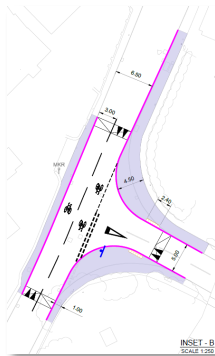


This would involve dissecting the current green area but leaving plenty of space for the Christmas tree placement (shown above) and not disturbing the utility boxes that are currently situated on the land. This will probably necessitate the removal of the 'Best Kept' village sign.

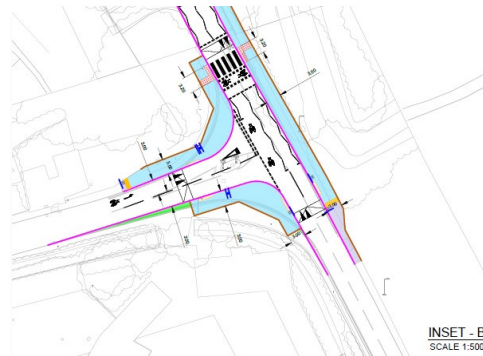


**Comments on ‘Melbourn Village Traffic Calming Sketch’**

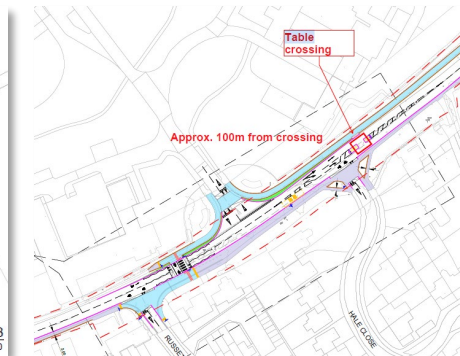
- Reservations about the table tops. It creates the impression of being safe to just walk across treating the area just like the continuation pavement.



*Greenbanks*

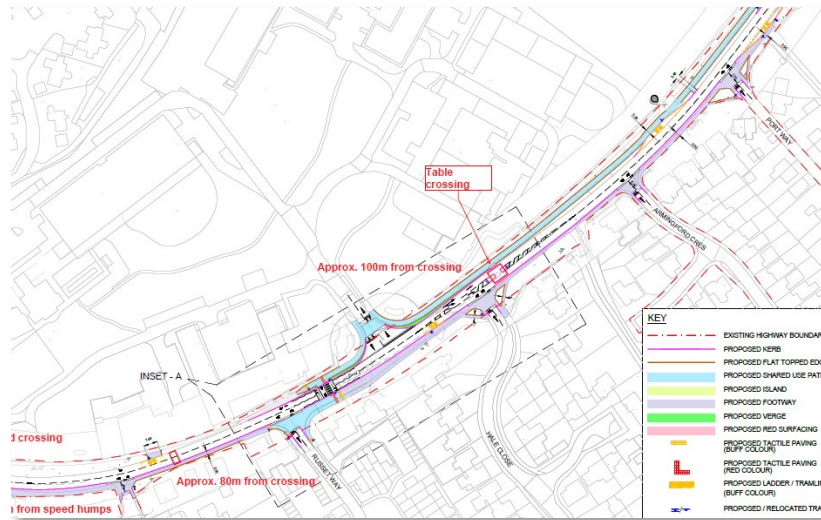


*Station Road*



*Hale Close*

- Concerns raised that the introduction of speed bumps – especially to around the Russet Way area may encourage car users to travel along the ‘back roads’ through the residential areas as a rat run to access .
- Ensure that changes to the Bruntwood Science Park entrance/exit road changes are included in any future plans.



- Request to remove suggested speed humps along High Street travelling from the crossing adjacent to Norgetts Lane all the way through the village up to Water Lane. It is thought that parking along this stretch of High Street should be sufficient for controlling traffic.
- Concerns were also raised that along the above mentioned stretch residential houses about the highway and noise from traversing the speed humps could be detrimental.